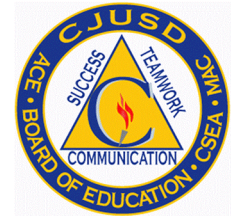


Colton Joint Unified School District

Frank Miranda, Ed.D., Superintendent

Gregory Fromm, Assistant Superintendent, Business Services Division

Owen Chang, Director of Facilities and Energy Management



BOARD OF EDUCATION

Ms. Joanne E. Thoring-Ojeda, *President*

Mr. Frank A. Ibarra, *Vice-President*

Mr. Dan Flores, *Clerk*

Ms. Bertha Flores

Mr. Israel Fuentes

Ms. Patt Haro

Ms. Berenice Sandoval

Commitment to Equal Opportunity

Date: October 18, 2023

ADDENDUM 1

Modular TK Classroom Additions at Various Sites

Colton Joint Unified School District

Bid No. 24-11 FAC

NOTICE TO BIDDERS

It is intended that all work affected by the following provisions shall conform to the original plans and specifications. Delete or modify each of the following items wherever appearing on Drawings, and/or specifications. Acknowledge receipt of Addendum 1 in the space provided on the Contractor's proposal. Failure to do so may subject bidder to disqualification.

PLAN SHEET REVISION

PJHM's Plans for Ruth Grimes Elementary School were not posted in the original bid documents. The following sheets are attached for you convenience, and will be uploaded to the plan room:

Sheet 1 - Site Plan

Sheet 2 – Building 1, Three Classroom Addition

Sheet 3 – Building 2, Two Classroom Addition

Sheet 4 – Building 1, Exterior Elevations

Sheet 5 – Building 2, Exterior Elevations

Sheet 6 – Interior Elevations

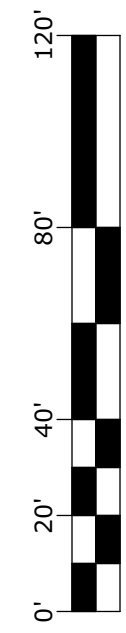
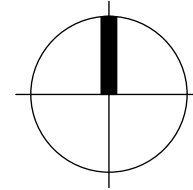
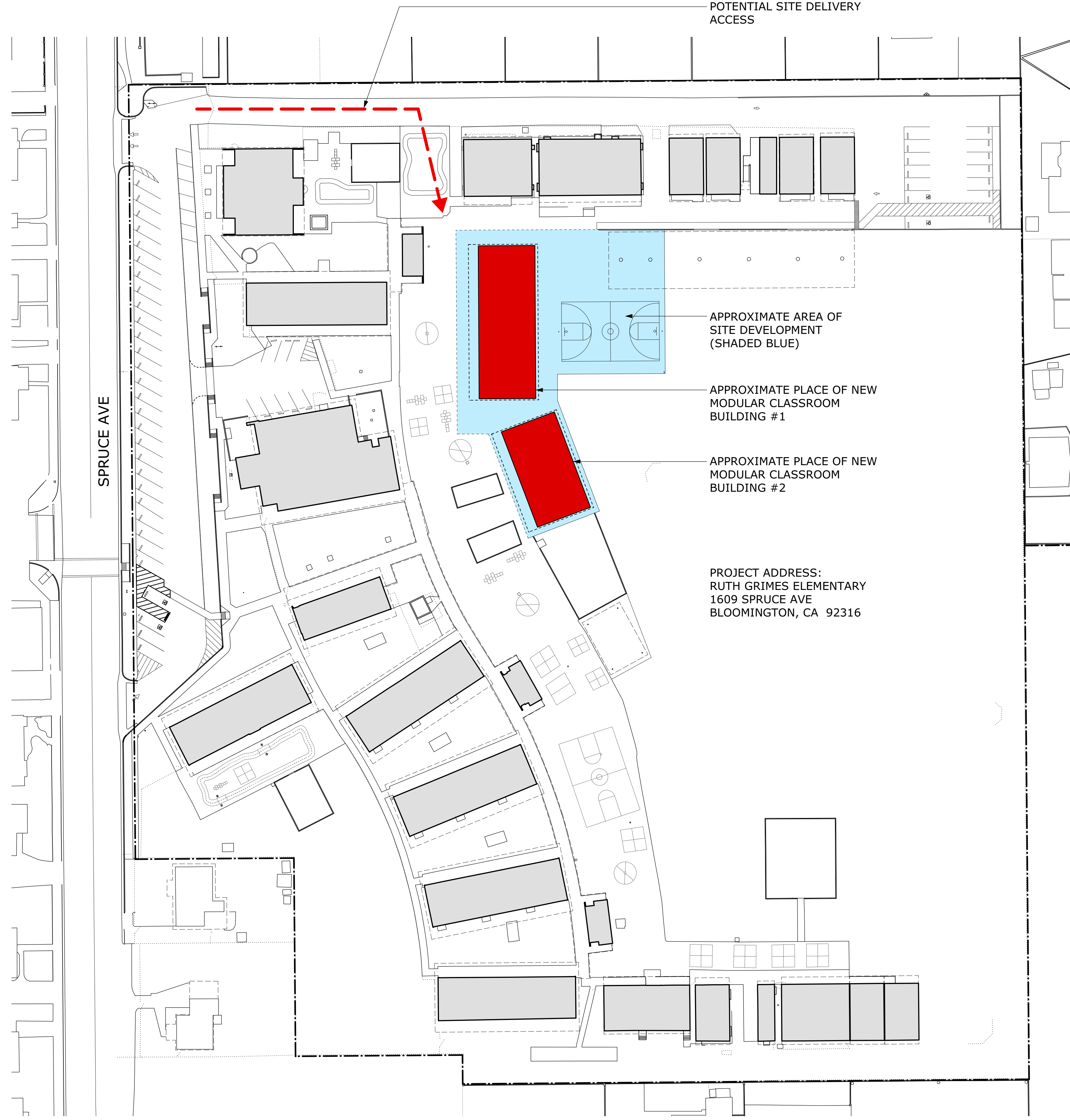
JOB WALK REVISION

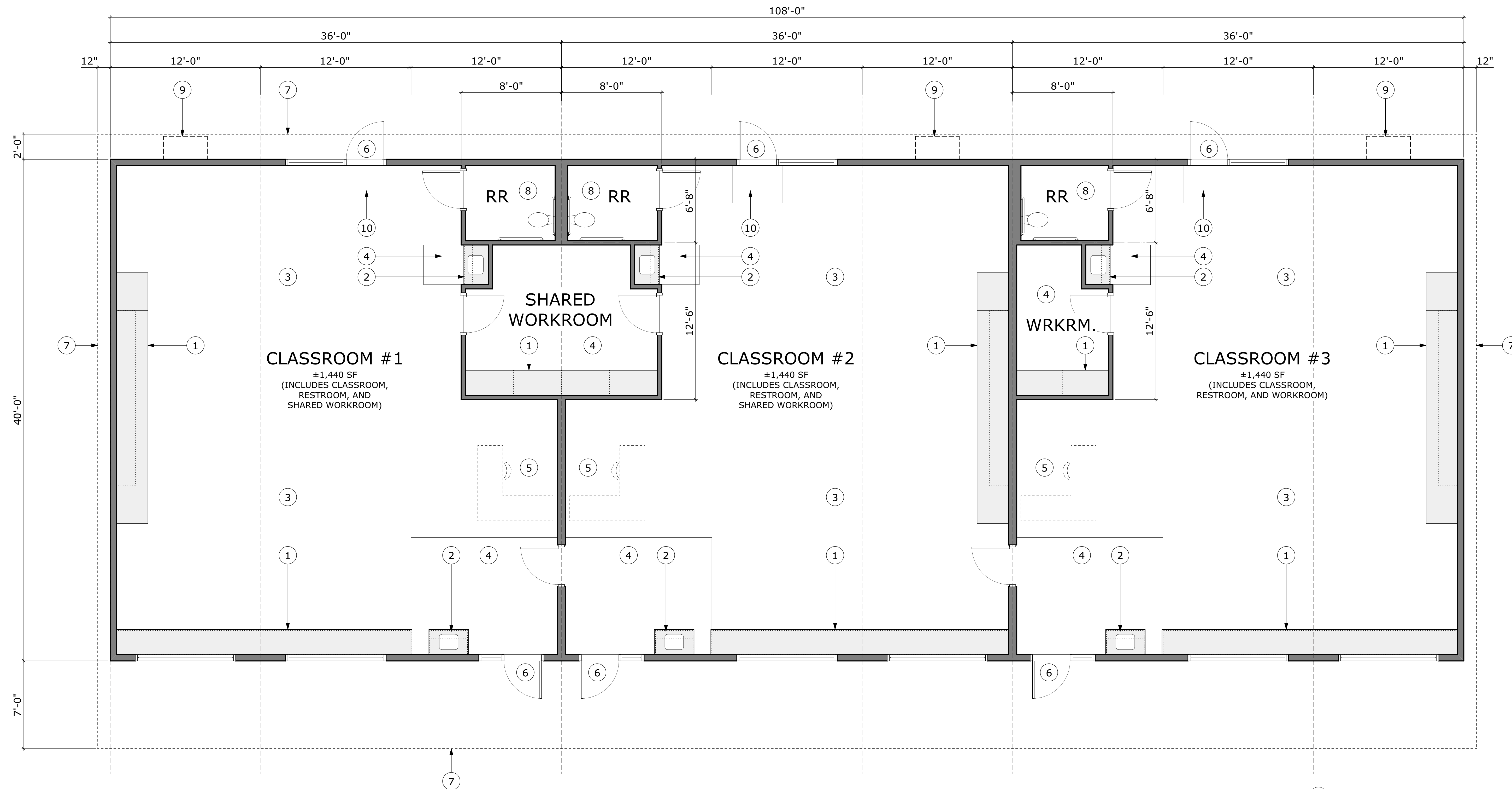
Mandatory job conferences will take place on **Wednesday, October 18, 2023** or **Monday, October 23, 2023, at 10:00 a.m.** starting at Ruth Grimes Elementary School Administration Building, 10009 Spruce Avenue, Bloomington, California 92316 and continue to Grand Terrace Elementary School, 12066 Vivenda Avenue, Grand Terrace, CA 92313 then to Terrace View Elementary School, 22731 Grand Terrace Road, Grand Terrace 92313. Bidders are not required to attend more than one mandatory walk.

Documents Provided:

Plans for Ruth Grimes Elementary School (6 sheets)

End of Addendum 1





- NOTES** ① →
1. CASEWORK PER INTERIOR ELEVATIONS
 2. ACCESSIBLE SINK BASE
 3. CARPET TILE FLOORING
 4. RESILIENT FLOORING
 5. TEACHER DESK
 6. DOOR WITH PANIC HARDWARE
 7. LINE OF ROOF OVERHANG
 8. FLOORING: EPOXY
 9. WALL MOUNTED MECHANICAL UNIT
 10. WALK-OFF CARPET TILE

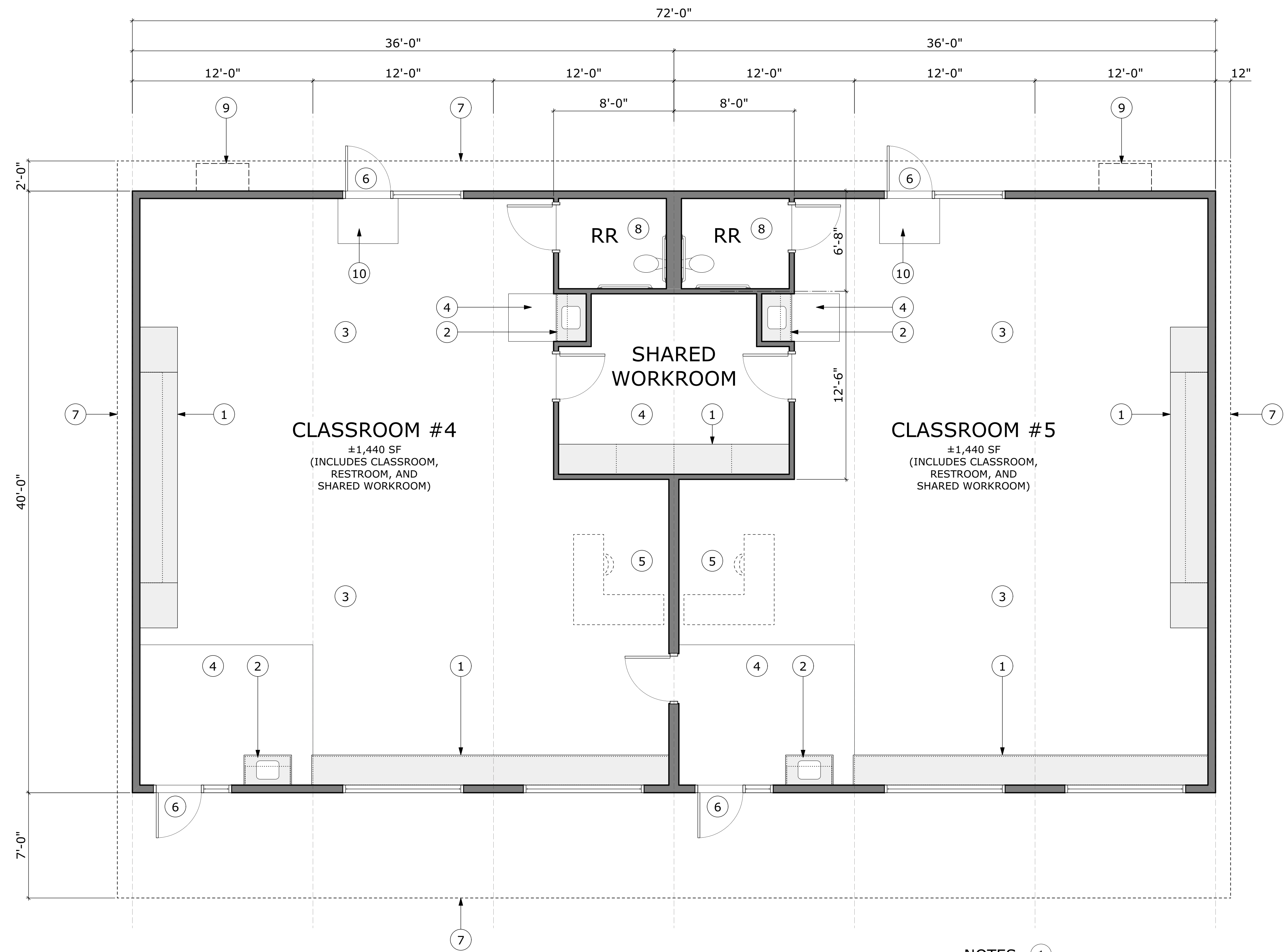
BUILDING #1 - FLOOR PLAN



OCTOBER 5, 2023

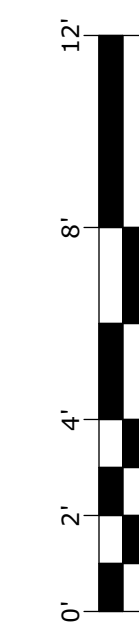
RUTH GRIMES ELEMENTARY SCHOOL
MODULAR CLASSROOM BID PACKAGE
COLTON JOINT UNIFIED SCHOOL DISTRICT

BUILDING #1 - (3 CR)
MODULAR CLASSROOM
FLOOR PLAN
SCALE: 1/4" = 1'-0"



- NOTES ① →
1. CASEWORK PER INTERIOR ELEVATIONS
 2. ACCESSIBLE SINK BASE
 3. CARPET TILE FLOORING
 4. RESILIENT FLOORING
 5. TEACHER DESK
 6. DOOR WITH PANIC HARDWARE
 7. LINE OF ROOF OVERHANG
 8. FLOORING: EPOXY
 9. WALL MOUNTED MECHANICAL UNIT
 10. WALK-OFF CARPET TILE

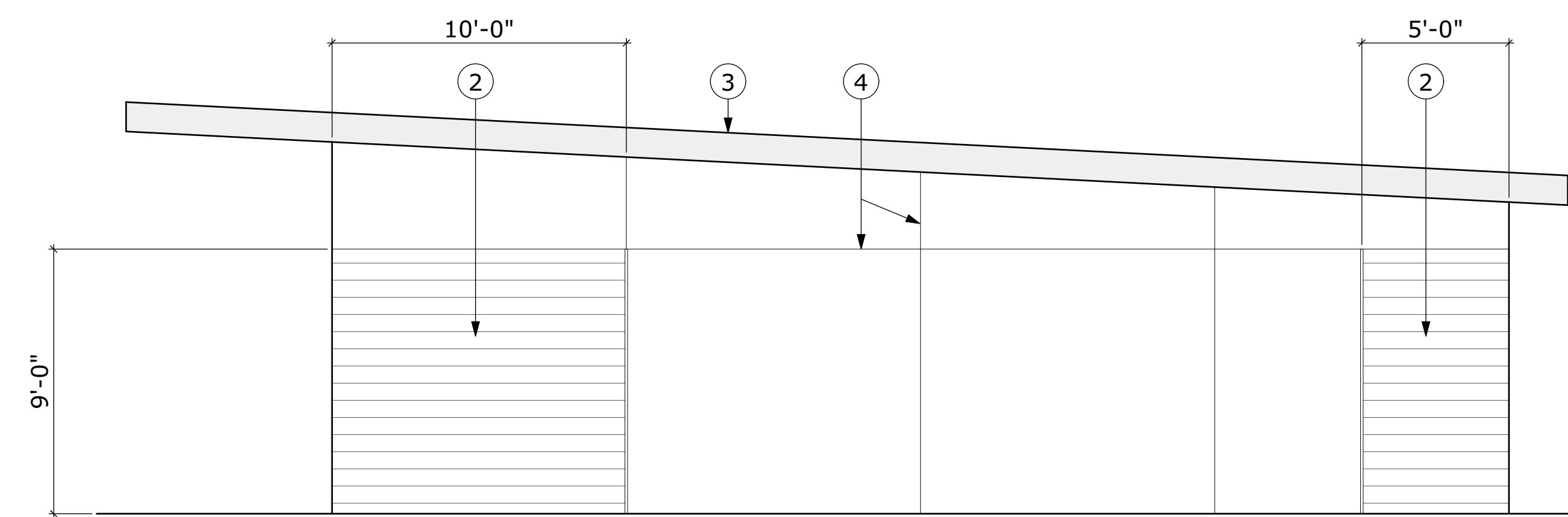
BUILDING #2 - (2 CR)
 MODULAR CLASSROOM
 FLOOR PLAN
 SCALE: 1/4" = 1'-0"



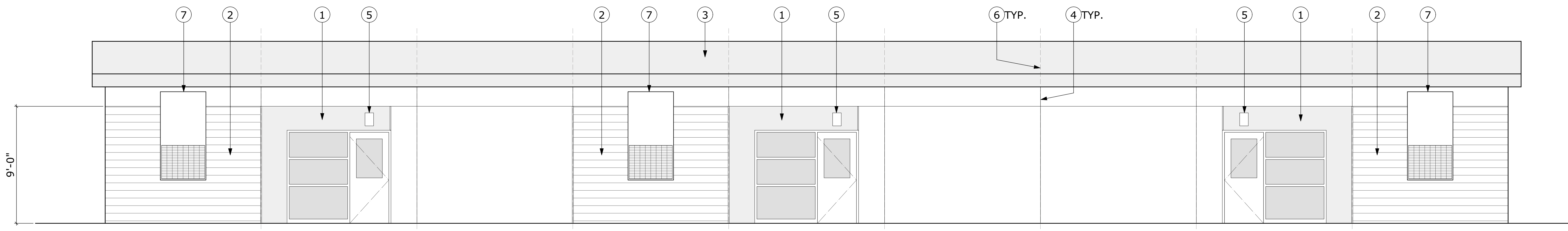
RUTH GRIMES ELEMENTARY SCHOOL
 MODULAR CLASSROOM BID PACKAGE
 COLTON JOINT UNIFIED SCHOOL DISTRICT

OCTOBER 5, 2023



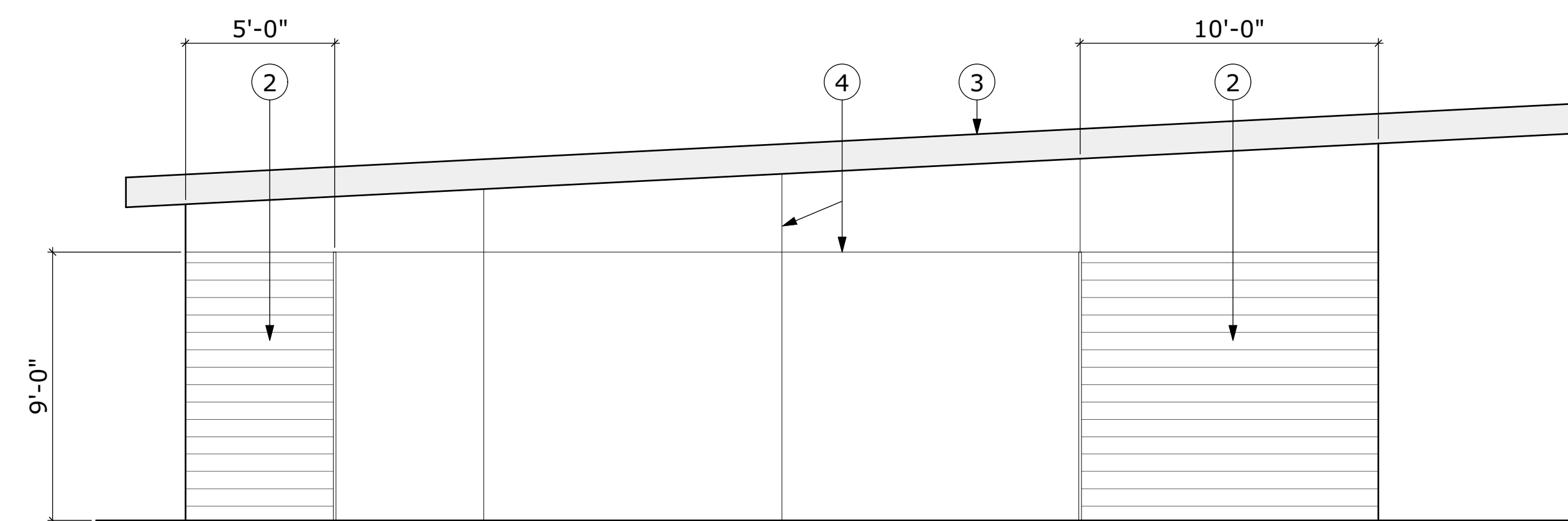


BUILDING #1 - EXTERIOR ELEVATION (SIDE)

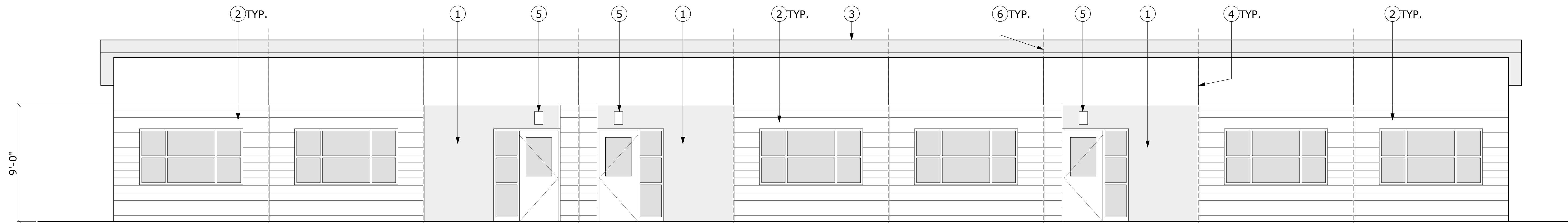


BUILDING #1 - EXTERIOR ELEVATION (REAR)

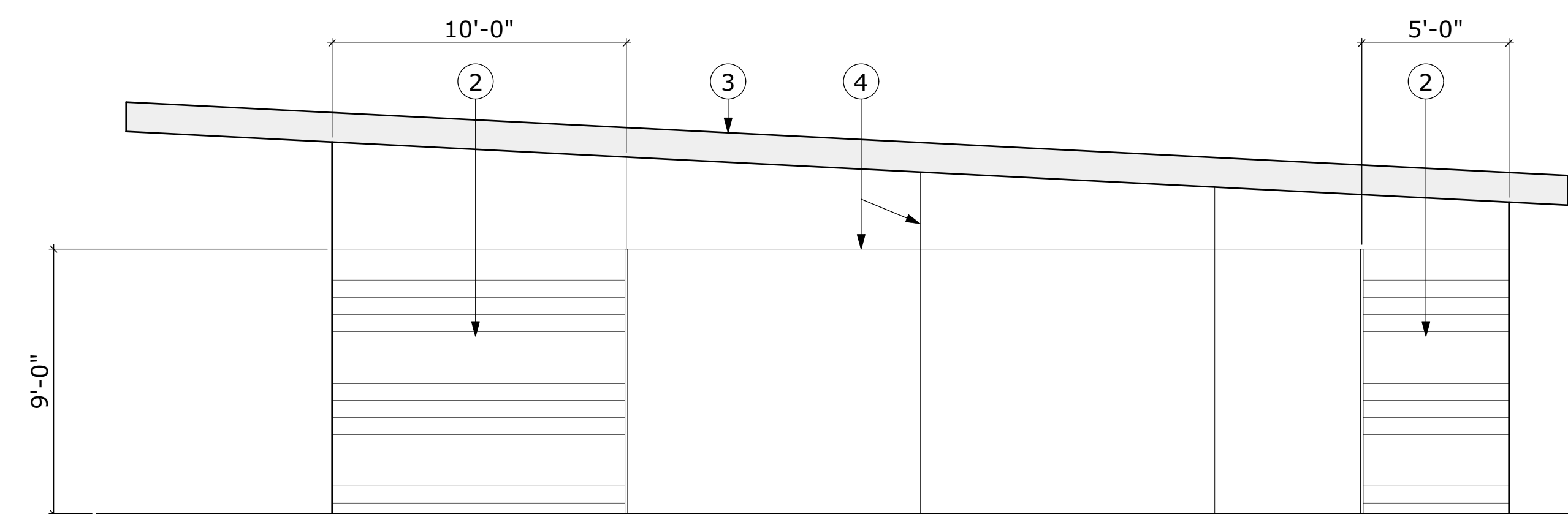
- NOTES ① →
1. PAINTED HYBRID STUCCO
 2. PAINTED LAP SIDING
 3. METAL ROOFING
 4. EXPANSION MOLDING
 5. LIGHT FIXTURE
 6. LINE OF MODULE
 7. WALL MOUNTED MECHANICAL UNIT



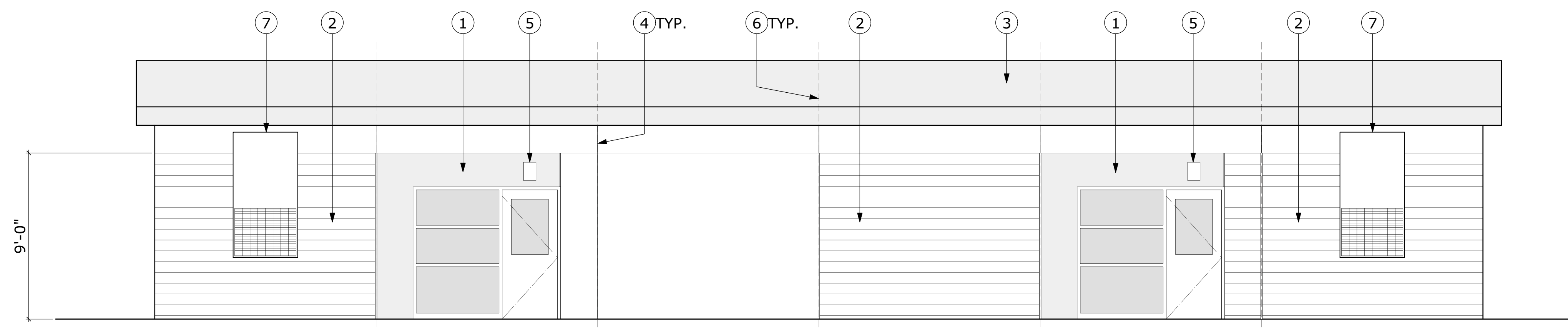
BUILDING #1 - EXTERIOR ELEVATION (SIDE)



BUILDING #1 - EXTERIOR ELEVATION (FRONT)

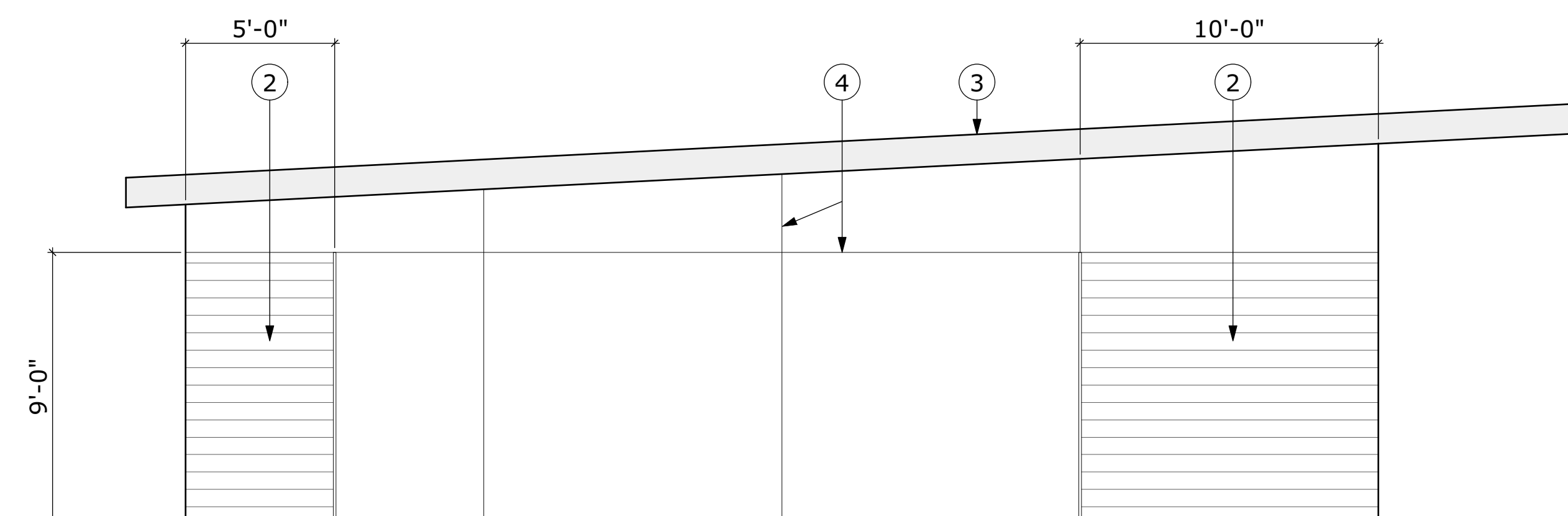


BUILDING #2 - EXTERIOR ELEVATION (SIDE)

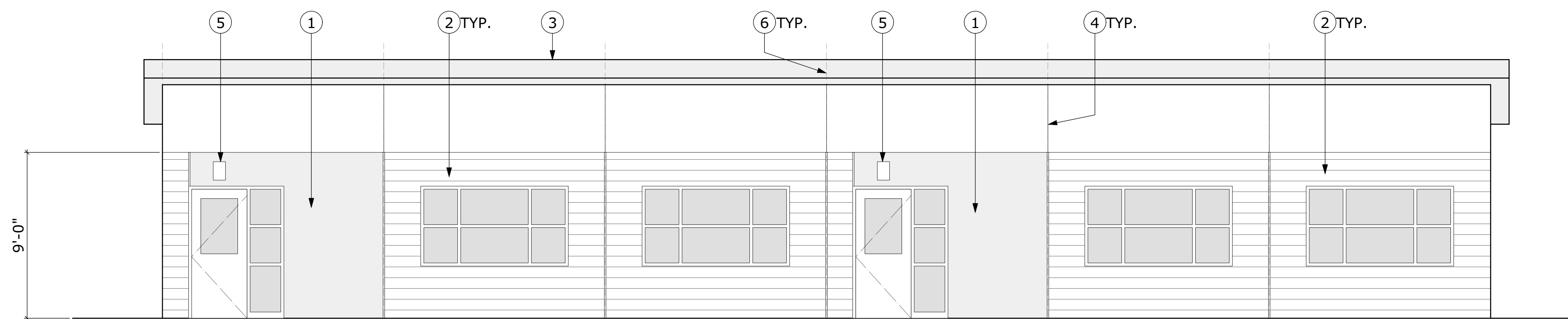


BUILDING #2 - EXTERIOR ELEVATION (REAR)

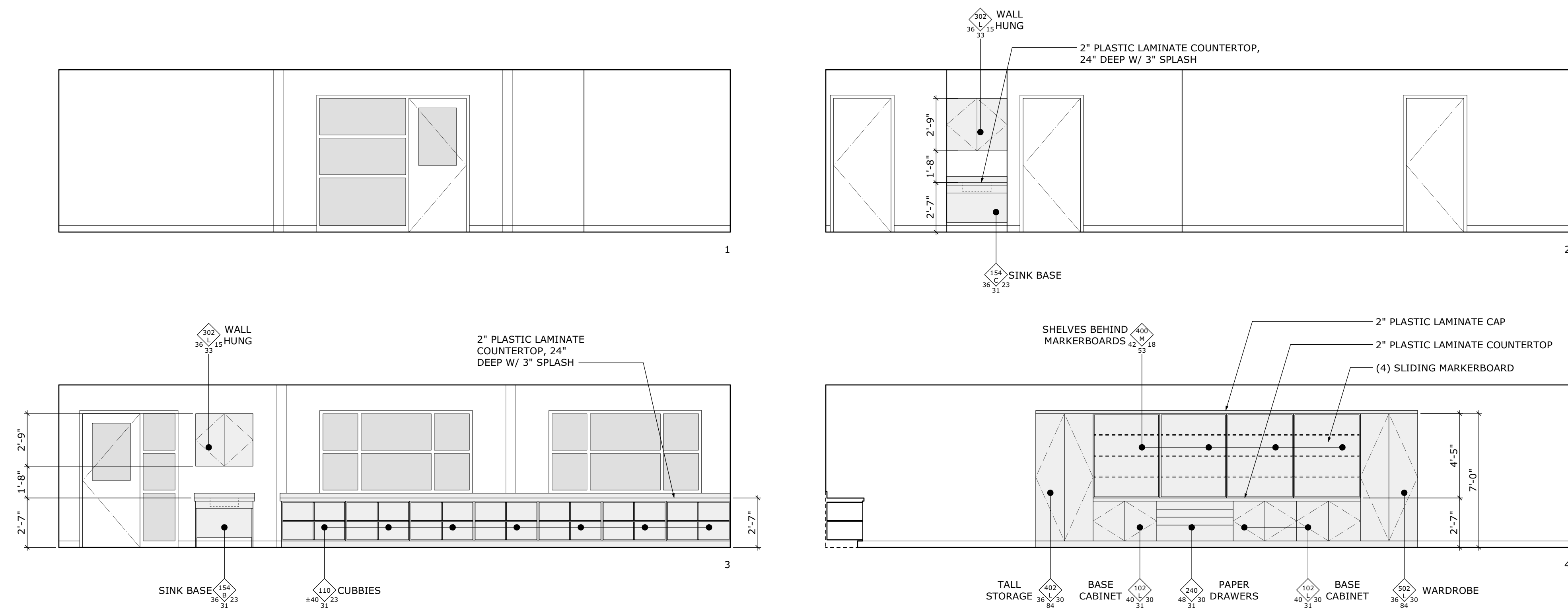
- NOTES ① →
1. PAINTED HYBRID STUCCO
 2. PAINTED LAP SIDING
 3. METAL ROOFING
 4. EXPANSION MOLDING
 5. LIGHT FIXTURE
 6. LINE OF MODULE
 7. WALL MOUNTED MECHANICAL UNIT



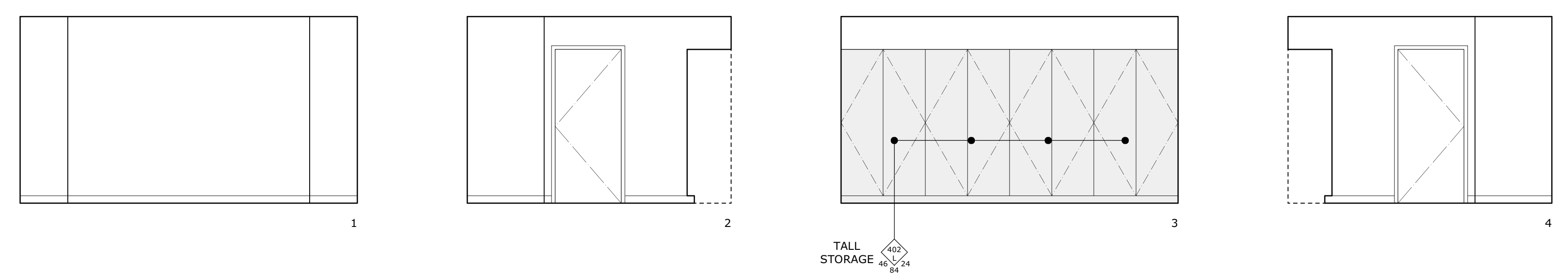
BUILDING #2 - EXTERIOR ELEVATION (SIDE)



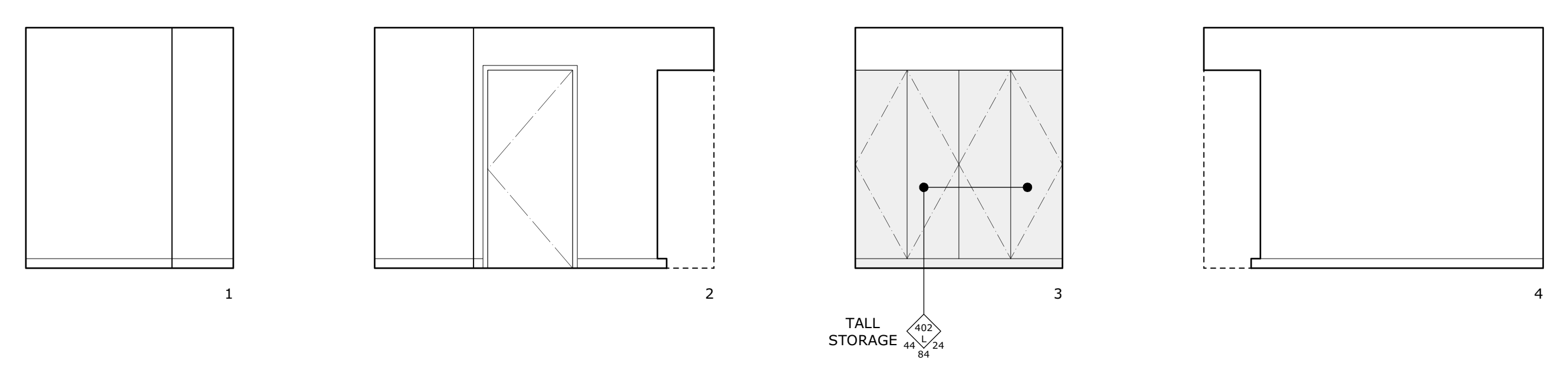
BUILDING #2 - EXTERIOR ELEVATION (FRONT)



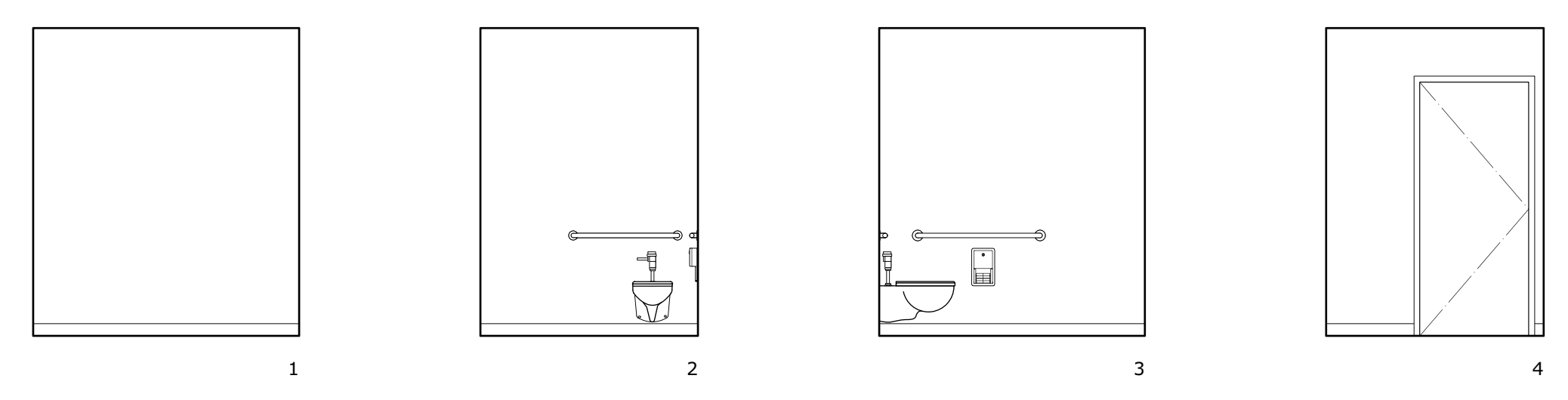
CLASSROOM #1
(CLASSROOM #2, #3, #4, AND #5 SIMILAR)



SHARED WORKROOM
(CLASSROOM #1 / #2 AND #4 / #5)



WORKROOM
(CLASSROOM #3)



RESTROOM
(CLASSROOM #1, #2, #3, #4 AND #5 SIMILAR)